



HISTORIC BRIDGE #20071
COUNTY ROAD 61
CARROLL COUNTY
MASONRY ARCH
CROSSES - UNNAMED CREEK
DATE OF CONSTRUCTION – 1935
BUILDER - CIVILIAN CONSERVATION CORPS (CCC)
HISTORIC BRIDGE INVENTORY DATE - 1987
SHPO NUMBER – CR1041
HAER NUMBER - AR-43
DATE LISTED ON NATIONAL REGISTER - 4/6/1990
LAT./LONG. 36:26:06.20, -93:45:57.14

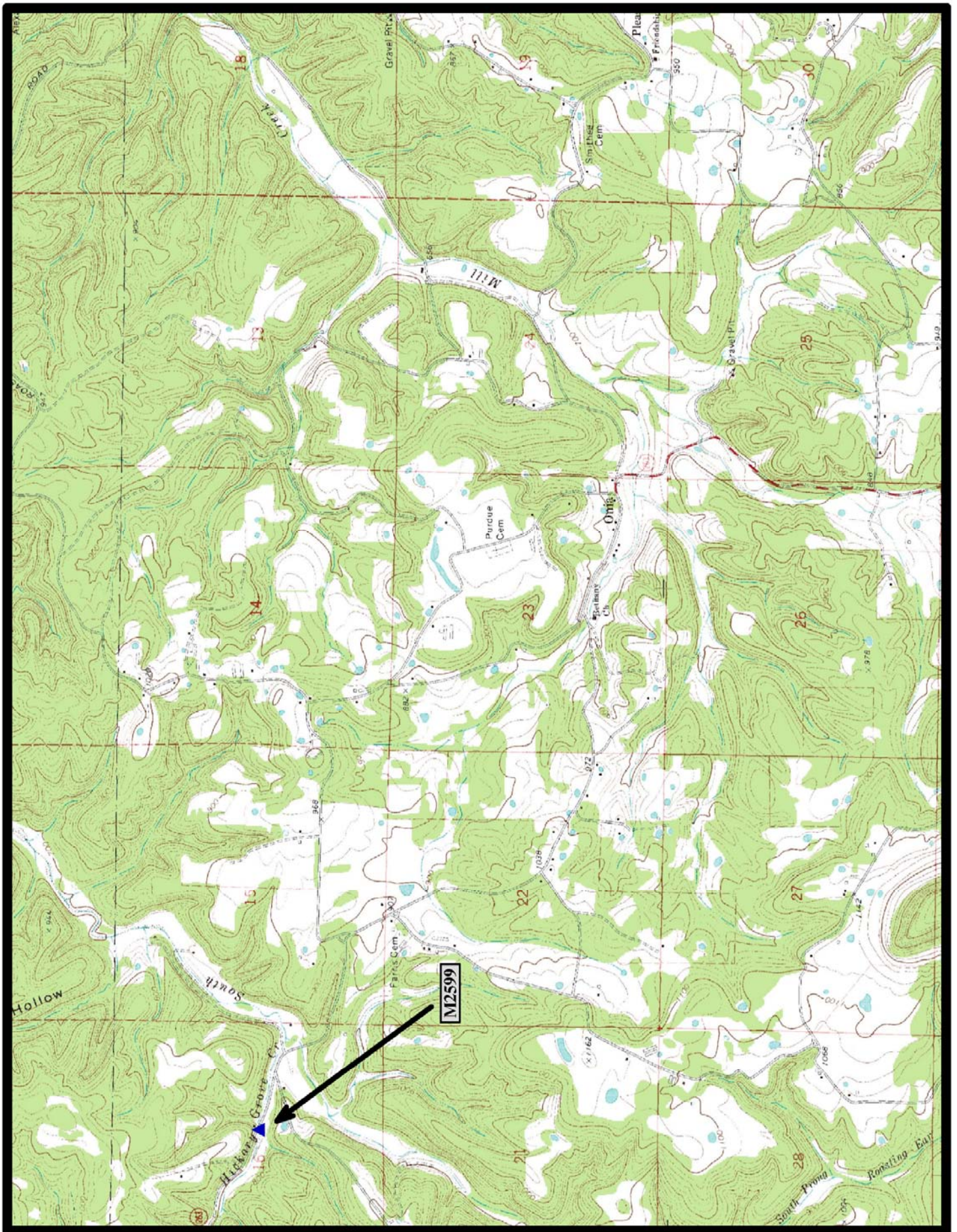


↑
North

Beaver 7.5 min. Quad



HISTORIC BRIDGE #M2599
STATE HIGHWAY 263
STONE COUNTY
MASONRY ARCH
CROSSES - HICKORY GROVE CREEK
DATE OF CONSTRUCTION – 1936
BUILDER - CIVILIAN CONSERVATION CORPS (CCC)
HISTORIC BRIDGE INVENTORY DATE - 2005
SHPO NUMBER –
HAER NUMBER -
DATE LISTED ON NATIONAL REGISTER -
LAT./LONG. 35:56:17.62, -92:22:06.21

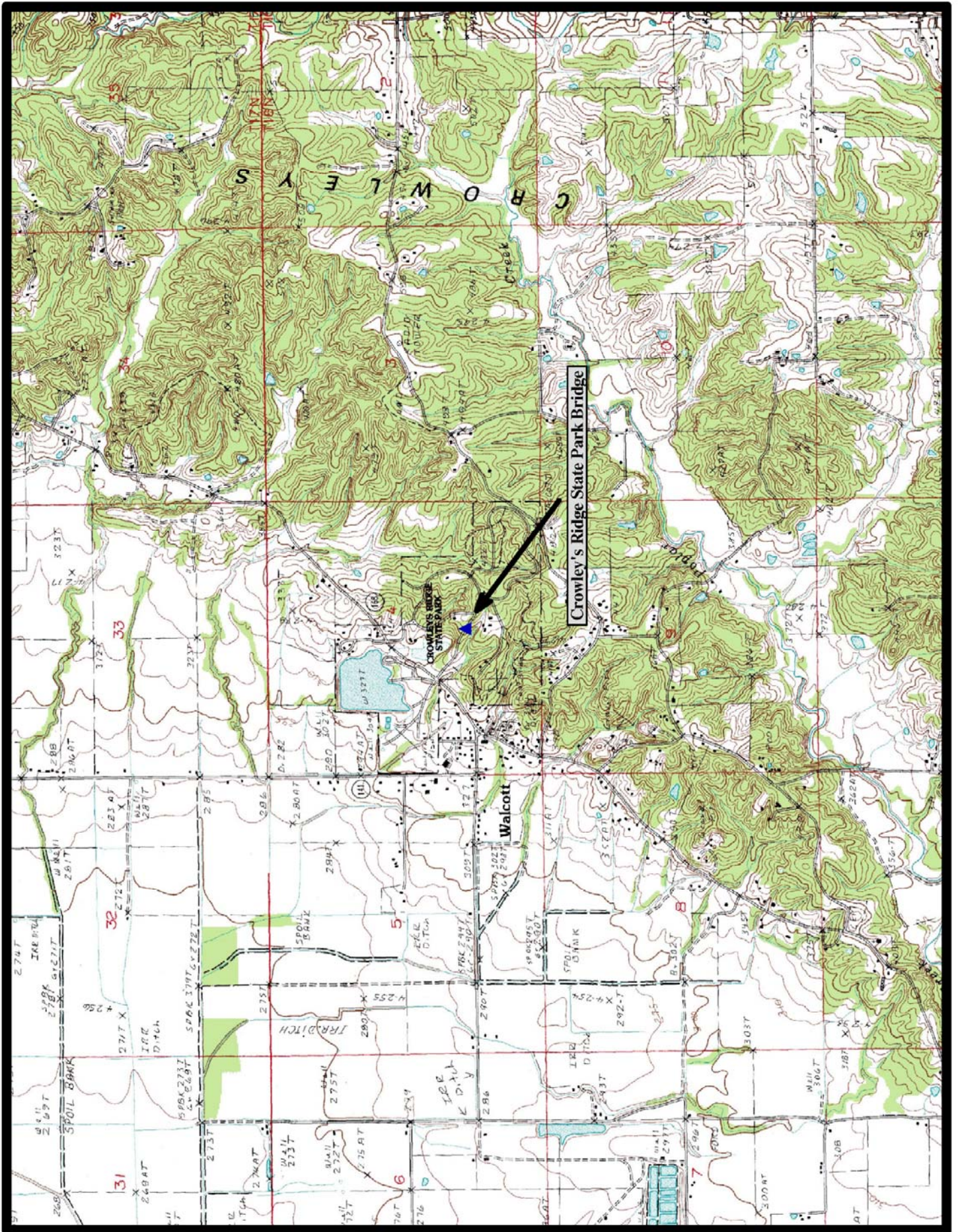


North

Onia 7.5 min. Quad



HISTORIC BRIDGE - CROWLEY'S RIDGE STATE PARK BRIDGE
CROWLEYS RIDGE ROAD
GREENE COUNTY
MASONRY ARCH
CROSSES - DRAINAGE DITCH
DATE OF CONSTRUCTION - 1935
BUILDER - CIVILIAN CONSERVATION CORPS (CCC)
HISTORIC BRIDGE INVENTORY DATE - 1987
SHPO NUMBER - GE0035
HAER NUMBER -
DATE LISTED ON NATIONAL REGISTER - 5/28/1992
LAT./LONG. 36:02:35.72, -90:39:48.07



Crowley's Ridge State Park Bridge

CROWLEY'S RIDGE STATE PARK

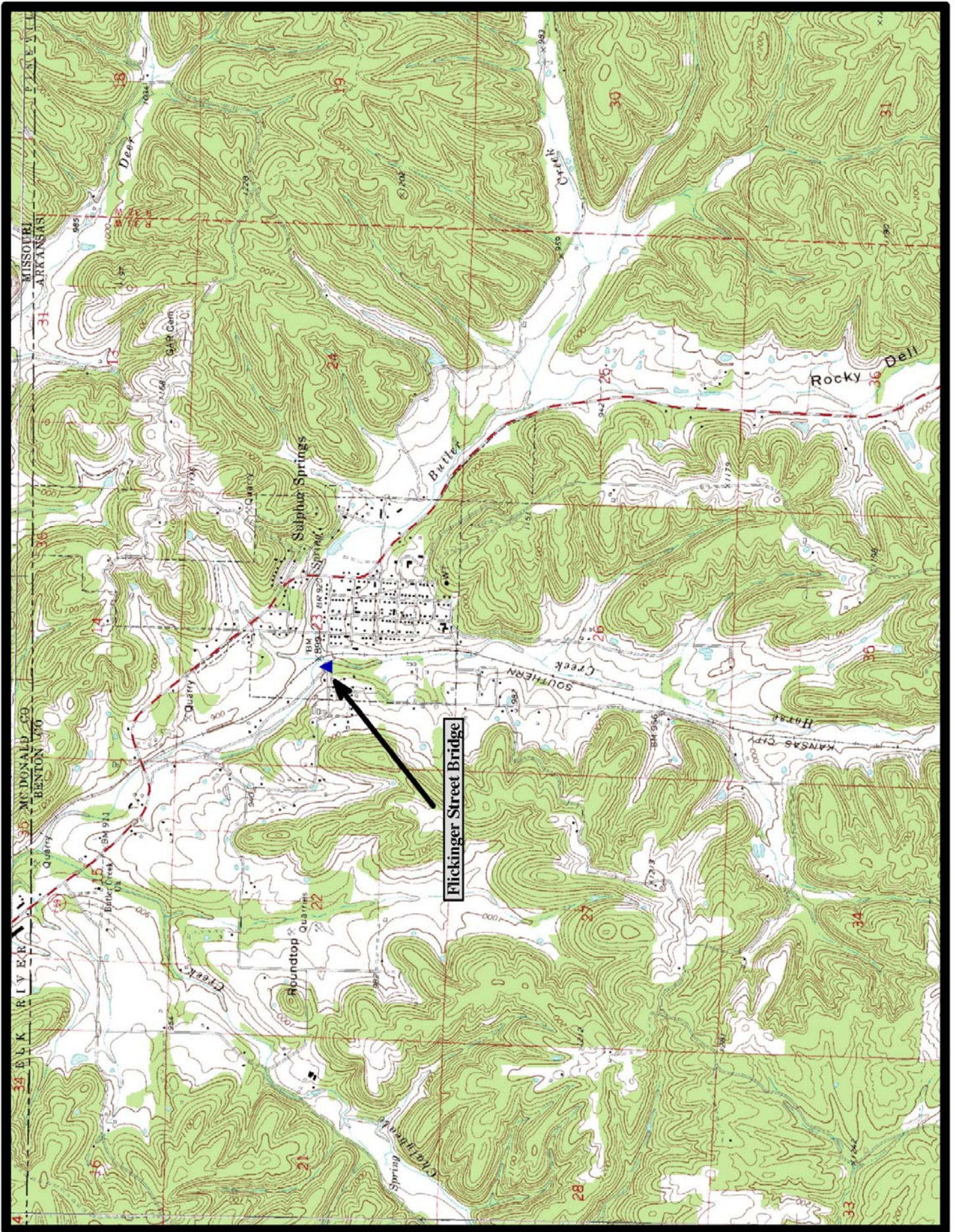
Walcott

North

Walcott 7.5 min. Quad



HISTORIC BRIDGE - FLICKINGER STREET BRIDGE
FICKINGER STREET
BENTON COUNTY
MASONRY ARCH
CROSSES - BUTLER CREEK
DATE OF CONSTRUCTION - UNKNOWN
BUILDER - UNKNOWN
HISTORIC BRIDGE INVENTORY DATE - 1995
SHPO NUMBER - BE3623
HAER NUMBER -
DATE LISTED ON NATIONAL REGISTER -
LAT./LONG. 36:29:00.87, -94:27:50.01

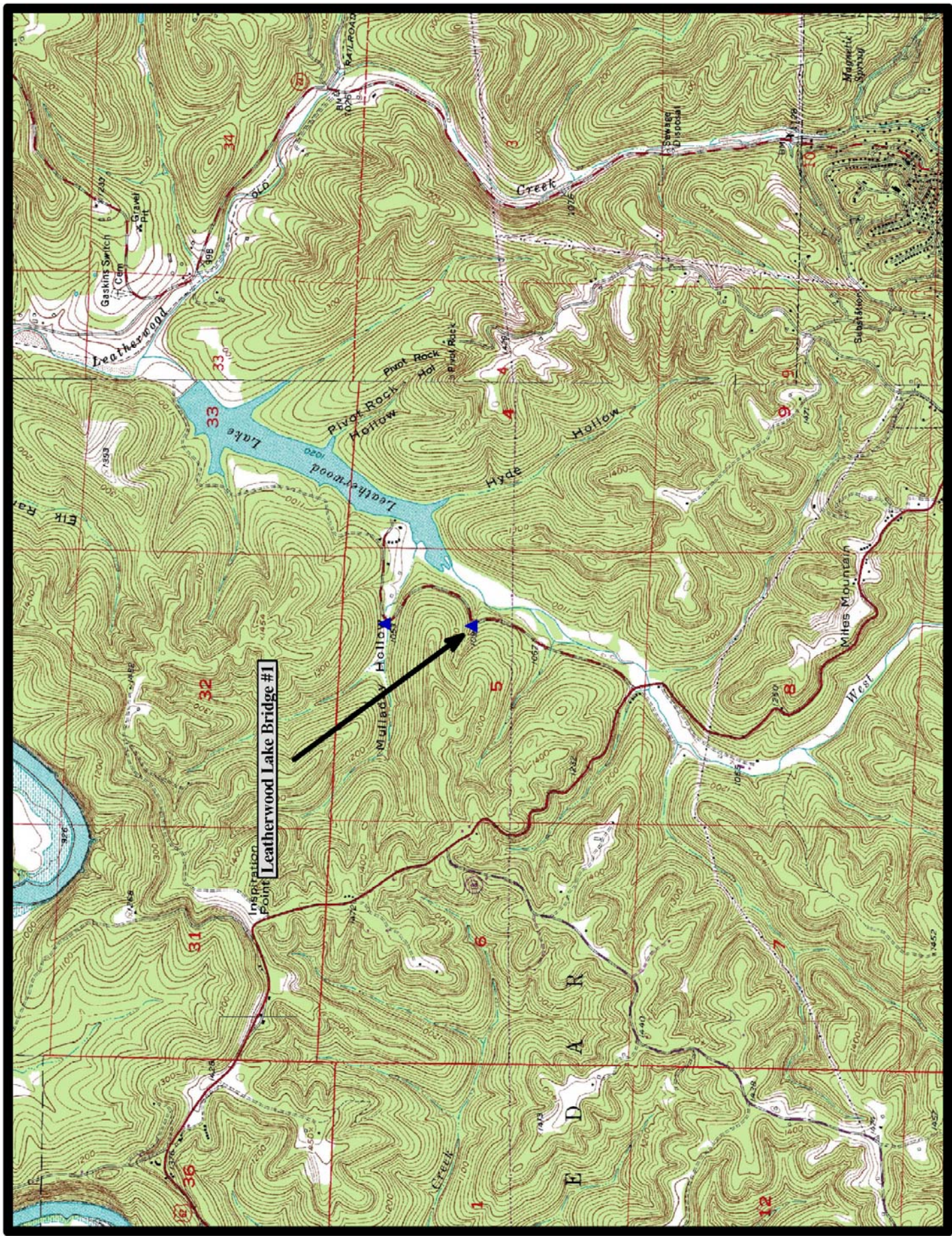


↑
North

Gravette 7.5 min. Quad



HISTORIC BRIDGE - LEATHERWOOD LAKE BRIDGE #1
COUNTY ROAD 6
CARROLL COUNTY
MASONRY ARCH
CROSSES - UNNAMED CREEK
DATE OF CONSTRUCTION - 1939
BUILDER - CIVILIAN CONSERVATION CORPS (CCC)
HISTORIC BRIDGE INVENTORY DATE - 2000
SHPO NUMBER - CR2025
HAER NUMBER -
DATE LISTED ON NATIONAL REGISTER - 11/24/1998
LAT./LONG. 36:25:49.70, -93:45:55.47



Leatherwood Lake Bridge #1

North

Beaver 7.5 min. Quad